

OTNS8600-DCI8 Stackable Ultra 100G WDM Transmission Platform

OTNS8600-DCI8 is an optoelectronic integrated WDM transmission platform designed for Data Centre Interconnection (DCI) by Guangzhou Sintai Communication Co., Ltd, features high integration (optoelectronic integration), large bandwidth (25.6Tbits / Fiber), simple deployment (no complicated tuning), easy operation and maintenance (NETCONF / YANG) and safety and reliability. It can meet the rapidly growing bandwidth demand between DCs, achieve flexible deployment of equipment, create an open optical network architecture and lead the DCI market into a new era of high-speed all-optical interconnection.

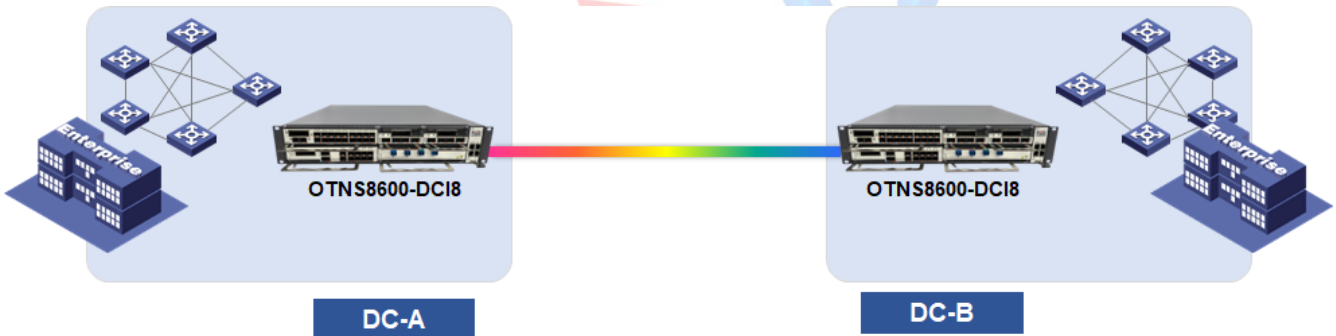
Product appearance



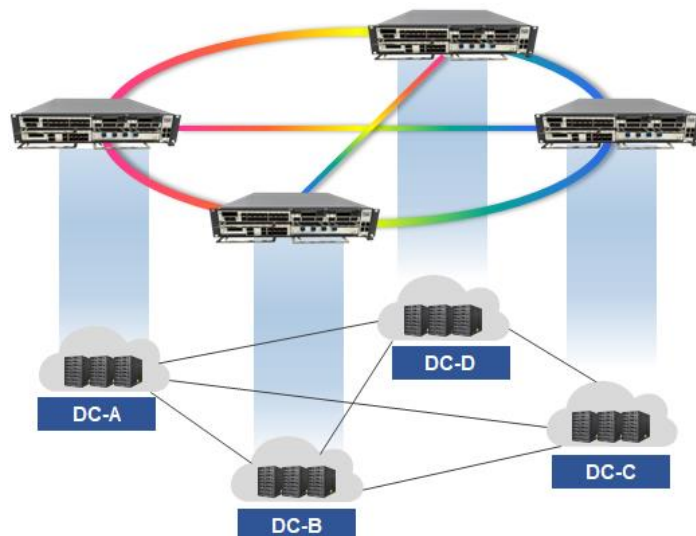
OTNS8600-DCI8

Application scenarios

Small network: single platform with high density optical layer card + electrical layer card for point-to-point networks.



Medium / large network: stacking of multiple electrical layers + multi-dimensional ROADM to form a ring network



● Product features

- Adopt optoelectronic integrated, pluggable modular design; components support hot-plugging, deploy and expand on demand.
- Front-air and rear-air cooling design, 2+1 FRU fan units available, automatic speed adjustment supported.
- 19" / 600mm depth cabinet can be installed, suitable for data center rooms and can be deployed with IT equipment in common cabinets.
- Transmission capacity up to 25.6Tbit/s per pair @ C+ band 400G*64λ, up to 3.2Tbit/s per subrack.
- Single wave capacity up to 400G (supports 100~400 programmable), continuous evolution towards 600G & 800G & 1.2T.
- Optical layer card highly integrated with OA, WSS, VOA, OSC, OTDR, OCM, OLP, etc. to simplify internal fiber connectivity
- Supports 10GE, 100GE, 100GE FlexE (pass-through mode), 400GE, STM-64, 10GE WAN, OTU2, OTU4 and other service access.
- Supports 9-dimensional ROADM networking and FlexGrid.
- Supports comprehensive performance monitoring and quality visibility at the service, OTN and optical layers.
- Provides multiple multi-layer network-level and device-level protection solutions. Protection reversal delay < 50ms, ensuring superior protection performance.
- Supports NETCONF/YANG standard open interface and GUI management platform based on B/S architecture.
- Supports visual operation and maintenance, with operation and maintenance information displayed via LCD screen.

Product Specifications

Parameter		Description
Chassis	Dimensions (H x W x D)	2U: 88 mm (H)×446 mm (W)×450 mm (D)
	Maximum capacity	3.2Tbit/s
	Number of service card slots	8
	Applicable cabinets	19" cabinet 600mm or deeper
Line-side port	Rate	<ul style="list-style-type: none"> ● 100G (PDM_QPSK) Programmable ● 200G (PDM_QPSK) Programmable ● 200G (PDM_8QAM) Programmable ● 200G (PDM_16QAM) Programmable ● 400G (PDM_16QAM) Programmable
	Optical module	Pluggable CFP2, wavelength adjustable
Client-side port	Service type	<ul style="list-style-type: none"> ● 10GE, 100GE, 100GE FlexE, 400GE ● OTU2, OTU2e, OTU4 ● STM-64 and 10GE WAN
	Optical module	<ul style="list-style-type: none"> ● Pluggable SFP+ ● Pluggable QSFP28 ● Pluggable QSFP-DD
Max. number of wavelengths		Fixed grid: 96 wavelengths @50 GHz
Channel spacing		Fixed grid: 50 GHz / 75 GHz / 100 GHz / 150 GHz
Central frequency range		191.35 GHz ~ 196.1 GHz
Central wavelength range		1528.77 nm ~ 1566.73 nm

Parameter		Description
Protection function		<ul style="list-style-type: none"> ● Optical line protection (OLP) ● Optical multiplexed segment protection (OMSP) ● Optical channel protection (OCHP)
Network management		<ul style="list-style-type: none"> ● Supports main controller 1+1 backup ● Supports CLI, NETCONF and B/S based GUI management platform ● Support ESC, OSC based DCN communication
Power supply	Back-up	Standard CRPS power supply 1+1 backup
	AC	<ul style="list-style-type: none"> ● Rated voltage range: <ul style="list-style-type: none"> – 100 V AC~130 V AC (50/60Hz) – 200 V AC~240 V AC (50/60Hz) ● Max. voltage range: 90 V AC~264 V AC (45Hz~65Hz)
	HVDC	<ul style="list-style-type: none"> ● Rated voltage range: 240 V HVDC ● Max. voltage range: 192 V HVDC~288 V HVDC
	DC	<ul style="list-style-type: none"> ● Rated voltage range: -48 V DC/-60 V DC ● Max. voltage range: -40 V DC~-72 V DC
Heat dissipation		<ul style="list-style-type: none"> ● Front inlet air and rear outlet air ● 2+1 Fan units backup
Typical power consumption		<1100W (Full Match)
Environment	Operating temperature	<ul style="list-style-type: none"> ● Short-term: -5°C~+45°C ● Long-term: 0°C~40°C Remarks: <ul style="list-style-type: none"> – The measurement points for product temperature and humidity are those measured at 1.5 metres above the floor and 0.4 metres from the front of the cabinet. – Short-term operating conditions are defined as no more than 96 consecutive hours and no more than 15 days per year in total.
	Storage temperature	-40°C~+70°C
	Humidity	5%~95% (no condensation)
	Noise (sound pressure at room temperature 27°C)	≤78 dBA